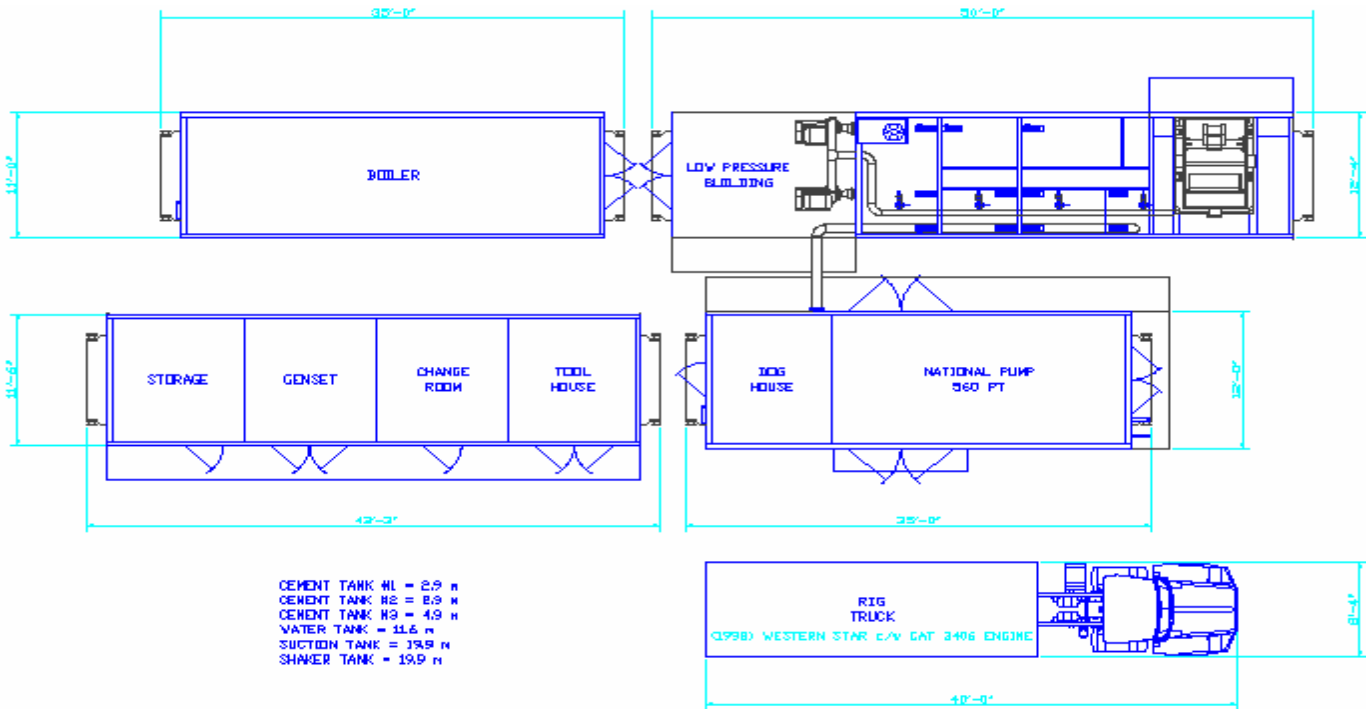




RIG 301 OVERVIEW



Drawworks

Make - Foremost
 Model - 3000
 Hoisting Capacity - 51,000 daN
 Pull Down - 25,000 daN

Carrier

Make - Foremost/Western Star
 Model - Explorer II
 Output Power - 3406 - 373kw

Rig Power

Make - Caterpillar
 Model - 3306
 Output Power - 200kw

Substructure

Capacity -L-16.8 X W-3.66 X H1.7m
 65,000daN

Mast

Capacity - 51,000 daN

Mud Pump

Make - National Oilwell
 Model - 560 PT Triplex
 Drive - 3408 with Allison Transmission
 and 5X6X10 precharge pump

Mud System

Total Volume - 50.5m³
 Active Volume - 45m³
 Compartments - 5
 Mixing - 2-5X6 Mission 37kw pumps

Shale Shaker

Make - Brandt
 Model - Cobra Linear

Top Drive

Make - Foremost
 Model - 240
 RPM - 210
 Torque - 18,000 FT. LBS

BOP Stack

Size - N/A
 Rating - Surface Rig

Accumulator - N/A

Surface Rig

Choke Manifold - N/A

Surface Rig

Boiler

Make - Dupre
 Model - 100 H.P.
 Fresh Water Tank - 12.7 m³
 Fuel Tank - 5000 litre

Fuel Tank - 10,000 litres

Water Tank - 11m³

Tubulars

Drill Pipe - 127mm 4" F.H.
 Collars - 152mm 4" F.H.

Special Features

Cementing Capabilities
 Dual hydraulic breakout tong system
 Pason EDR
 Slant capabilities
 Pipe Handling
 Power Tongs for Casing, not required
 Substructure if diverter required for surface
 Handle up to 508mm casing

Rated Depth 650 meters
No. of Loads (winter) 5